

# Girteka

## MOVING FORWARD





**OUR SENSE OF PURPOSE  
TO BE THE OBVIOUS  
FIRST CHOICE**

**RESPONSIBLE LOGISTICS**



CLIENTS



COLLEAGUES



COMMUNITY

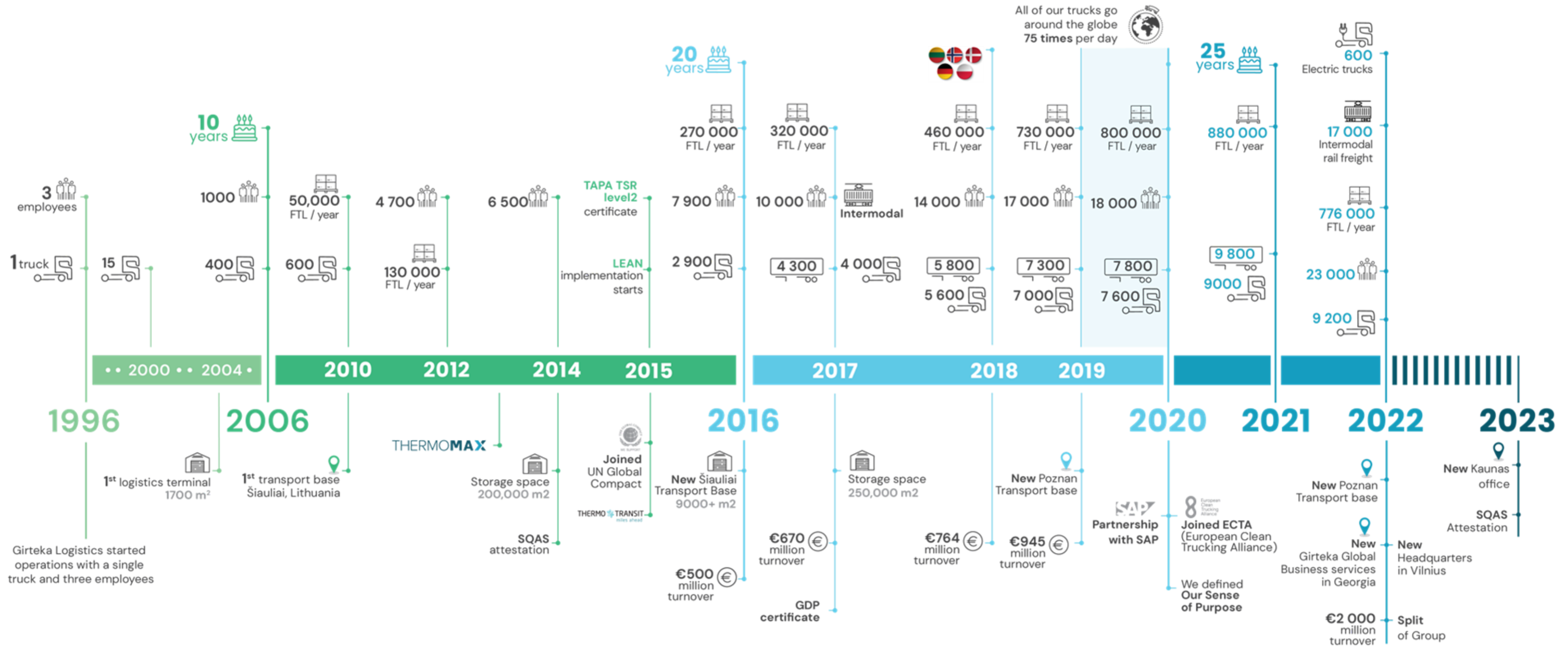


SHAREHOLDERS

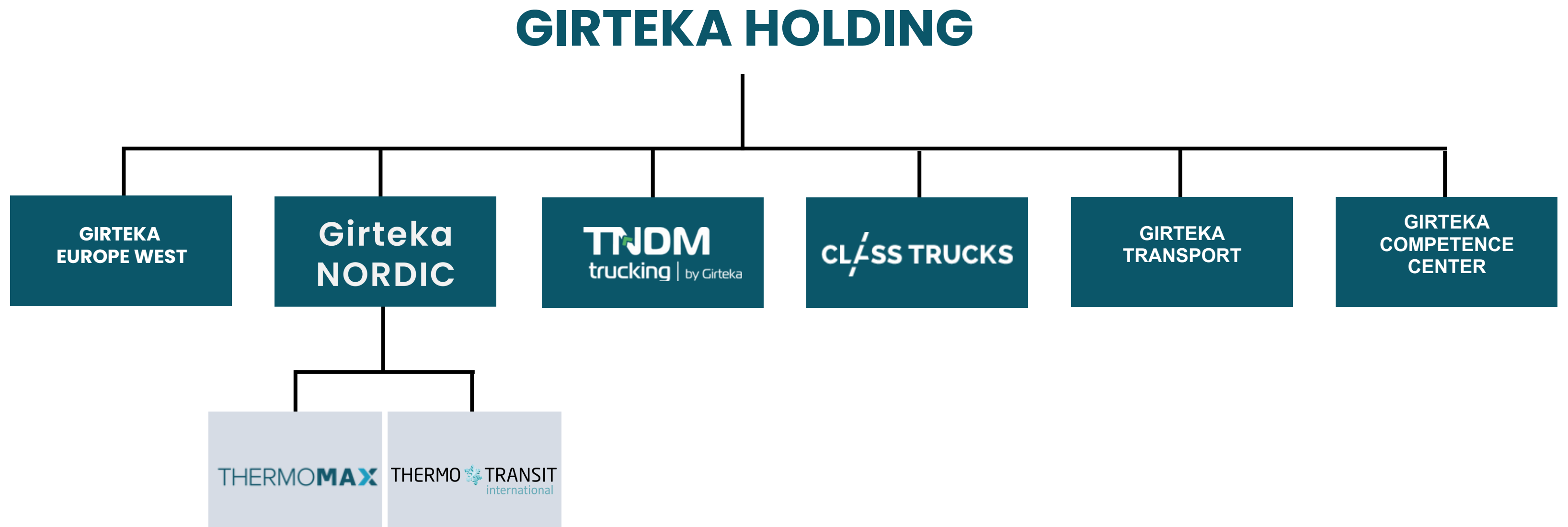


PARTNERS

# Our Growth



# Our group structure



# Logistics in Girteka Nordic



THERMO ❄️ TRANSIT & THERMOMAX  
miles ahead



# On a map

## Headquarters:

- Thermo-Transit, Padborg, Denmark
- Thermo-Transit, Oslo, Norway
- ThermoMax, Trondheim, Norway
- Girteka, Vilnius, Lithuania

## Terminals:

- Padborg, Denmark.
- Waddinxveen, Netherlands.
- Oslo, Norway.

## Offices:

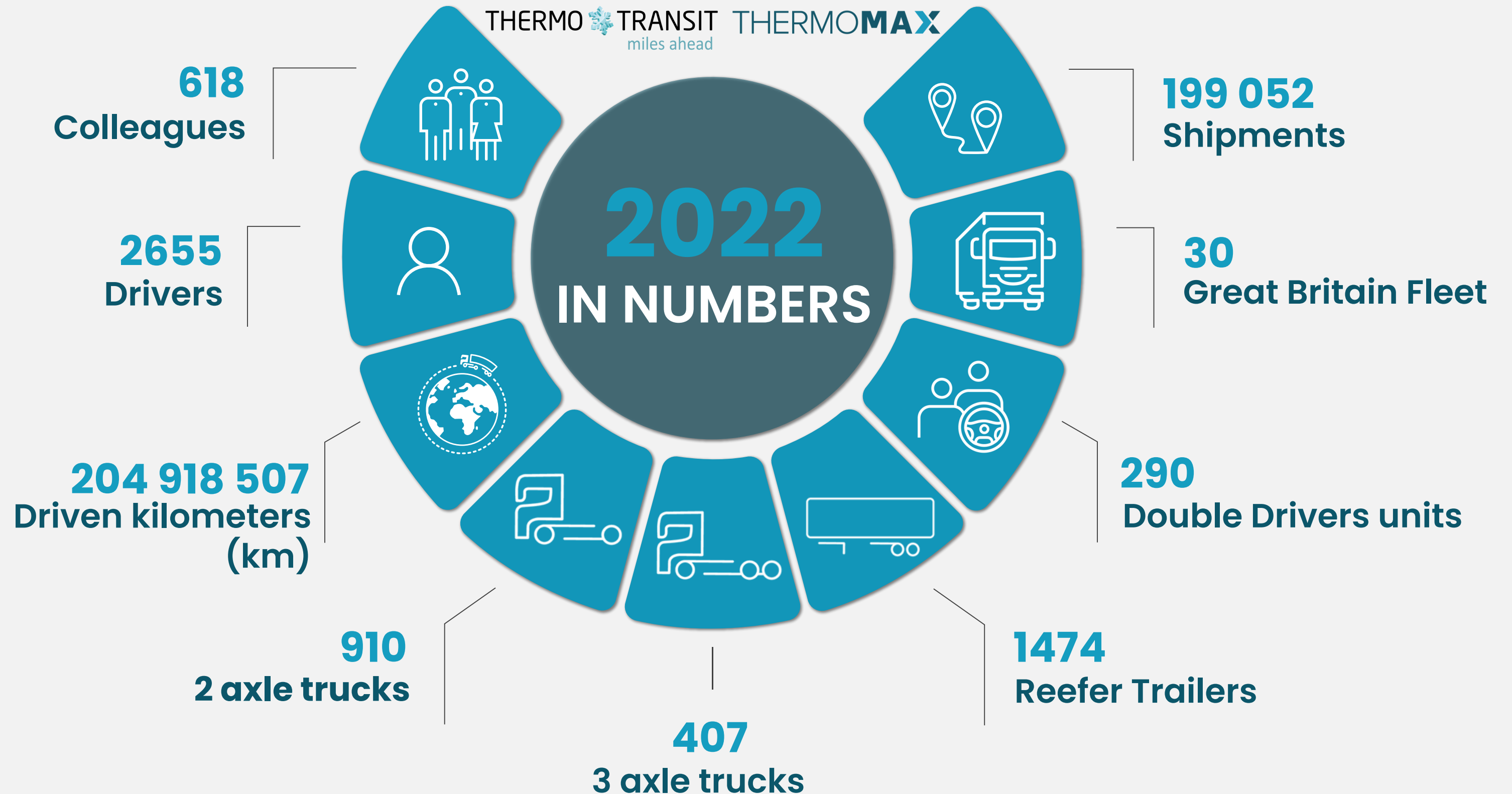
- Poznan, Poland
- Alesund, Norway.
- Namsos, Norway.
- Bo In Vesteralen, Norway.
- Handewitt, Germany.
- Malaga, Spain.
- Barlinek, Poland.



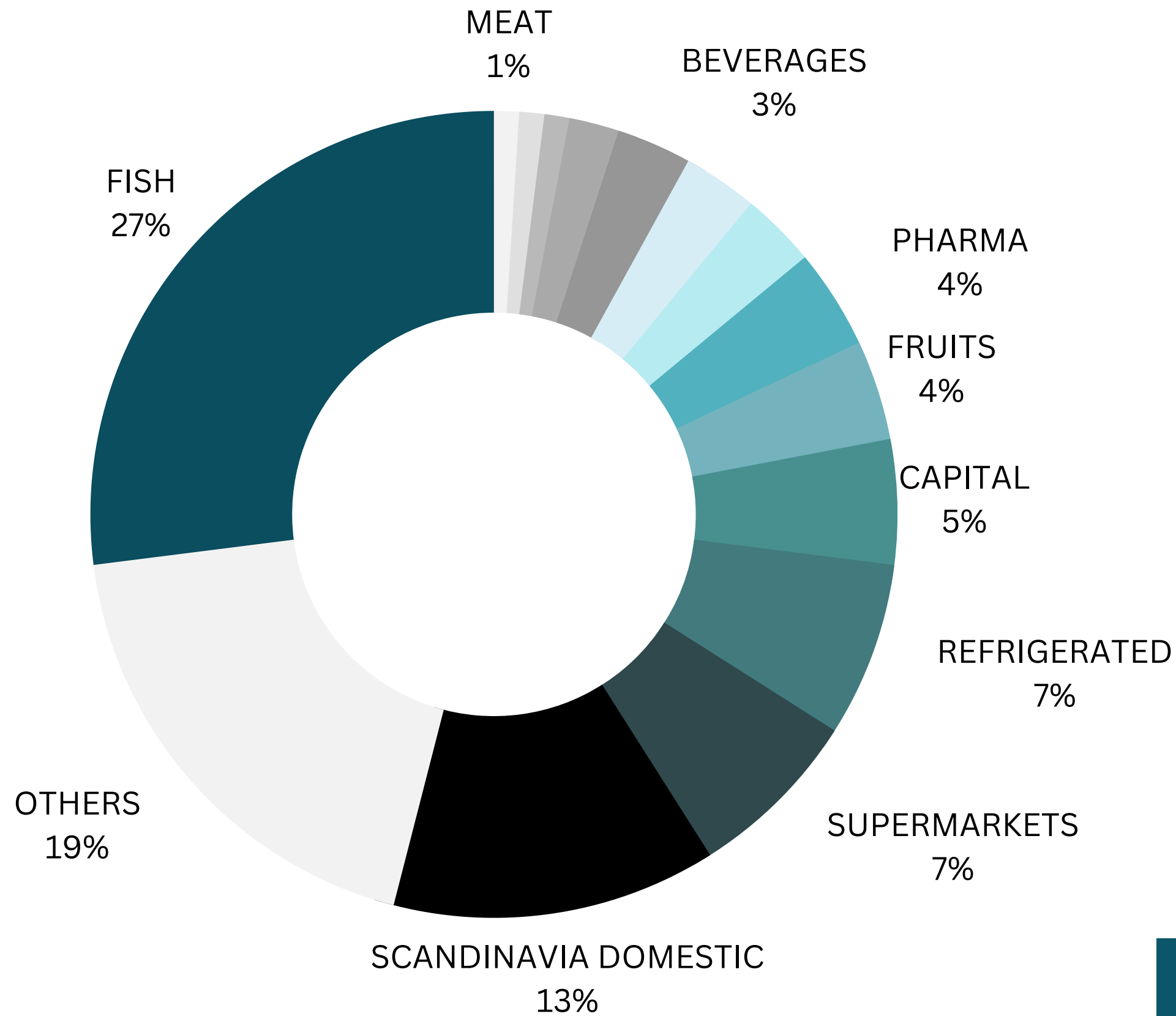
# WRAP UP



THERMO TRANSIT THERMOMAX  
miles ahead



# Our industries served



CARGO DAMAGE PREVENTION WITH TAPA 1 LOCKS



GDP-CERTIFIED FLEET AND TEAM



TEMPERATURE MONITORING ON LOADING



COOPERATION WITH KGH AND CUSTOMS CLEARANCE KNOW-HOW



MOBILITY PACKAGE IMPLEMENTATION

ISO 9001

ISO 14001

GDP

SQAS

TAPA

IFS



# Expertise in food & seafood logistics

## COLD-CHAIN PERISHABLE GOODS

The cold chain logistics industry requires knowledge and understanding of how to transport perishable goods, including food. At Girteka, we have extensive experience to do it professionally and ensure the best quality.

We have invested in the newest equipment, from fuel-efficient Euro 6 trucks to trailers with cooling equipment that range from -25 to +25 C in order to provide you the best Food and Seafood cold chain logistics solutions.



TEMPERATURE  
MONITORING  
ON LOADING



ONLINE  
THERMOGRAPH  
REPORTS ON SITE



THERMO-MAPPED  
ANNUALLY CALIBRATED  
SEMI-TRAILERS



# Expertise in secure logistics

## INCREASED CARGO SECURITY

Every Girteka truck is equipped to delivery your goods safely, with TAPA locks on every trailer and every load monitored during transport. Additional security measures are available to assure extra care of your cargo, extending our security guarantee.



ROUTES  
PLANNED IN  
ADVANCE



GEO FENCING



24/7 SOS  
CENTER



CARGO IS  
MONITORED DURING  
TRANSPORT



# Logistics in Girteka Nordic



EVERY VEHICLE IS PROVIDED WITH  
**SNOW CHAINS**

3-AXLE TRUCKS WITH 2 EXTRA AG7 –  
96D WHEEL CHAINS FOR BETTER  
GRIP



HANDPICKED DRIVERS WITH NO LESS  
THAN **2 YEARS** OF EXPERIENCE



COOPERATION WITH KGH AND  
CUSTOMS CLEARANCE KNOW-HOW



DRIVERS ARE PROVIDED WITH HIGH  
VISIBILITY VESTS, PROTECTIVE  
GLOVES, WINTER JACKETS &  
**SAFETY SHOES**



DRIVERS HAVE FORKLIFT  
**CERTIFICATIONS**



TRYGG TRAILER AND TRUCKERS  
**GUIDE.**

# Delivery information - temperature

STANDARD



FULLY DEVELOPED NETWORK



CARGO DAMAGE PREVENTION WITH TAPA LOCKS



POSSIBILITY TO LOAD FROM VARIOUS PLACES



24/7 CONTROL TOWER

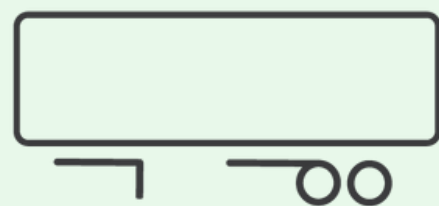


24/7 LOCATION AND TEMPERATURE MONITORING



24/7 HUMAN CONTACT & PROBLEM SOLVING

EXTRA



STANDBY TRAILERS FLEET



PARKING ONLY IN SECURED PARKING SPACES



2 DRIVERS FOR EXPRESS DELIVERIES

TEMP.



TEMPERATURE MONITORING ON LOADING



ONLINE THERMOGRAPH REPORTS ON SITE

# Drivers training program

Girteka in-house Drivers Academy supports our drivers in their professional development.

Every driver completes **33 compulsory courses**, with additional courses available for increased specialization, including:

- Eco-driving
- Industry-specific training, including GDP
- Safe driving in winter conditions
- Driving in the United Kingdom (UK)
- Forklift certification training
- Cargo documentation & customs procedures
- In 2021 our drivers have **completed more than 60,000 training courses**.
- **Winter driving courses.**



The background features a series of overlapping, wavy, organic shapes in various shades of blue and green. The top portion is a light sky blue, transitioning into a medium blue, then a dark teal, and finally into two shades of green (medium and light) in the bottom right corner. The word 'SUSTAINABILITY' is centered in the medium blue section.

SUSTAINABILITY

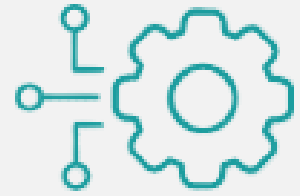
# Responsible Logistics



Modernizing the vehicle fleet to achieve the lowest possible greenhouse gas (GHG) emissions



Increasing intermodal transportation capacity.



Digitalizing our operations to reduce the number of empty kilometres



Educating our truck drivers on eco-driving practices to maximize fuel efficiency and increase road safety.



Increasing the use of alternative fuels, with a particular focus on HVO



Ensuring our own responsible consumption



Partnerships.



The background features a series of overlapping, wavy, organic shapes in various shades of blue and green. The top portion is a light sky blue, transitioning into a medium blue, then a darker teal, and finally a vibrant green at the bottom right. The text is centered in the middle of the composition.

# CORPORATE SOCIAL RESPONSIBILITY



# Corporate social responsibility

Girteka wants to create long-term value for our stakeholders: Our Community, Clients, Colleagues, Shareholders, and Partners by doing business in an **ENVIRONMENTALLY AND SOCIALLY RESPONSIBLE** way.

We joined the UN Global Compact in early 2015 and have published public CSR reports annually ever since, both on our website and on the UN Global Compact platform.



**SAFETY ON THE ROADS**  
Free handout of 30 000 copies to Lithuanian children





## PROTECTING ME AND YOU

Twice a year we participate in an annual road safety event organized by the Lithuanian Road Administration and presenting an educational activity to promote reflector wearing right here in the truck of our trailer.



## BE SAFE ON THE ROADS

Publishing 30,000 children's books on road safety to distribute them at Circle K gas stations across Lithuania.



## OPERA ON THE TRUCK

For the second year in a row, we have brought opera to the community together with the Lithuanian National Opera and Ballet Theater.



## CHILDREN SAFETY NEAR THE WATER

Partnering with the Lithuanian Swimming Federation, Girteka sought to bring awareness about the safety of children when around water bodies.

# CORPORATE SOCIAL RESPONSIBILITY

We create long-term value for our stakeholders: Our Community, Clients, Colleagues, Shareholders and Partners by doing business in an environmentally and socially responsible way.